

Z1 XTERRA PRE-RUNNER FRONT PANEL INSTALLATION MANUAL



This Installation Manual is intended for the following models:

2005-2015

Nissan Xterra

PROLOGUE:

Study these instructions completely before proceeding to assembly. The installer must have a thorough knowledge of automotive systems operation. If unfamiliar with any of the concepts outlined in this instruction, we recommend the installation be completed by a qualified professional.

WARNING!

Extreme caution should be taken when performing maintenance or performance upgrades to your vehicle. Please observe and abide by any Warning or Caution labels placed on the various components and tools used when servicing your vehicle. If you have any questions regarding installation or the various components included with the Z1 Off-Road Xterra Pre-Runner Front Bumper, consult with a Professional Mechanic, or contact Z1 Off-Road for more information.

PARTS INCLUDED:

Item	Quantity	Description
1	1	Bumper
2	4	Shim
3	5	M12 x 1.25 Flanged Hex Head Screw, 35mm
4	5	M12 x 1.25 Flanged Hex Head Screw, 50mm
5	10	M12 Oversized Washer
Bumper Wings		
6	1	Left Wing
7	1	Right Wing
8	9	M10 x 1.5 Button Head Screw, 25mm
9	9	M10 x 1.5 Locknut
Radiator Panel (Optional)		
10	1	Radiator Panel
11	7	M6 x 1.0 Button Head Screw, 14mm
Winch Cradle (Optional)		
12	1	Winch Cradle
13	9	M10 x 1.5 Button Head Screw, 25mm
14	9	M10 x 1.5 Locknut

TOOLS REQUIRED:

- Hydraulic Jack
- (2) 2-Ton (or greater) Jack Stands
- Ratchet
- Ratchet Extension(s)
- Assorted Metric Sockets
- Assorted Metric Wrenches
- Torque Wrench

SAFETY REQUIREMENTS:

- Always wear safety glasses and any necessary protective garments. If using any fluids, chemicals, or solvents, a respirator is recommended.
- Always use properly rated jack stands when working under your vehicle.
- Always keep limbs and parts away from moving drivetrain parts.
- Always turn the ignition to the OFF position and disconnect the NEGATIVE battery terminal.
- Only operate drivetrain in safe space and well-ventilated areas.

BEFORE YOU BEGIN:

Remove contents from the Z1 Off-Road Xterra Pre-Runner Front Bumper and verify that ALL necessary hardware is present.

PROCEDURE:

1. Place the transmission in Park position (or in Reverse gear if equipped with a manual transmission). Apply the parking brake.
2. Loosen the lug nuts on the front wheels of the vehicle, but do not remove them yet.
3. Raise and support the vehicle using a jack and jack stands. Refer to the vehicle's Owner's Manual for proper jacking points.
4. Remove the front wheels and lug nuts from the vehicle.
5. Remove the front Fender Liners and Mud Guards from the vehicle. They will be secured by a combination of screws and plastic tabs. *Figure 1.*

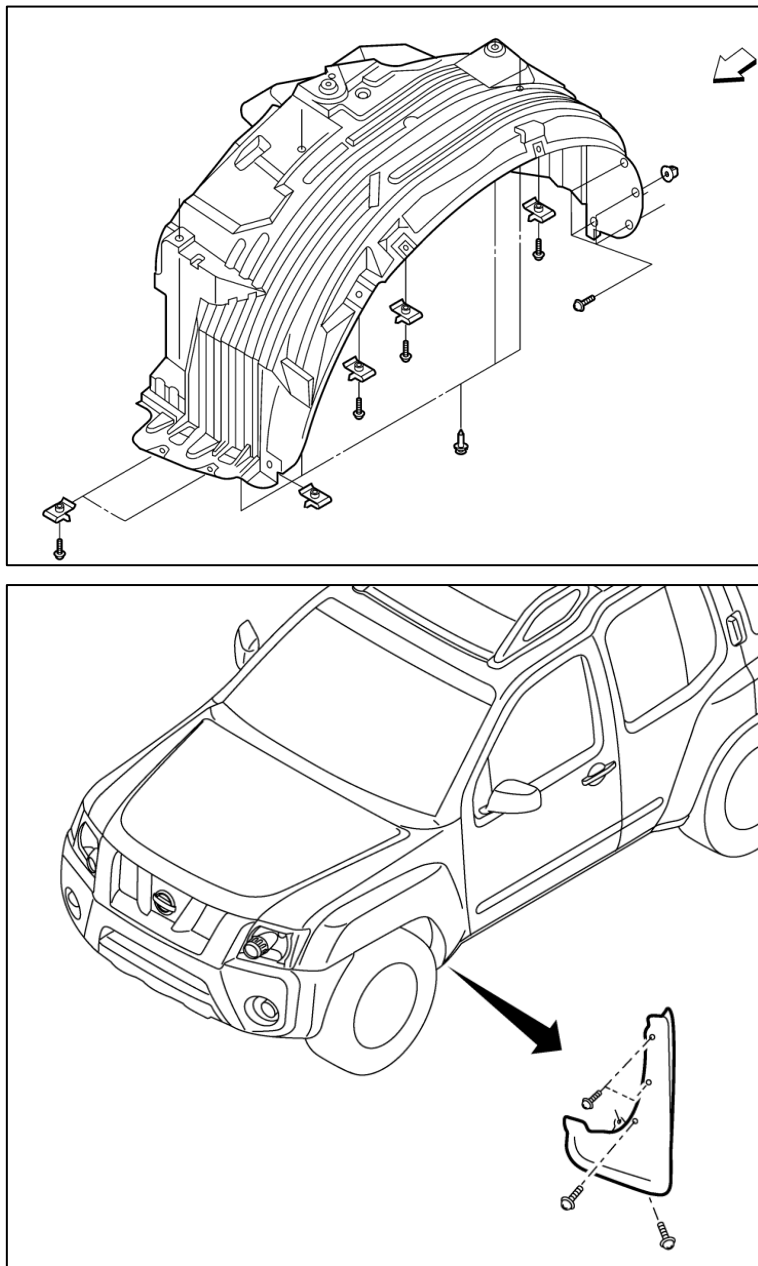


Figure 1

6. Disconnect the Fog Light Connector on each side of the vehicle. *Figure 2.*



Figure 2

7. Open and support the hood of the vehicle.
8. Remove the (6) six plastic clips securing the Front Grille to the vehicle. *Figure 3.*

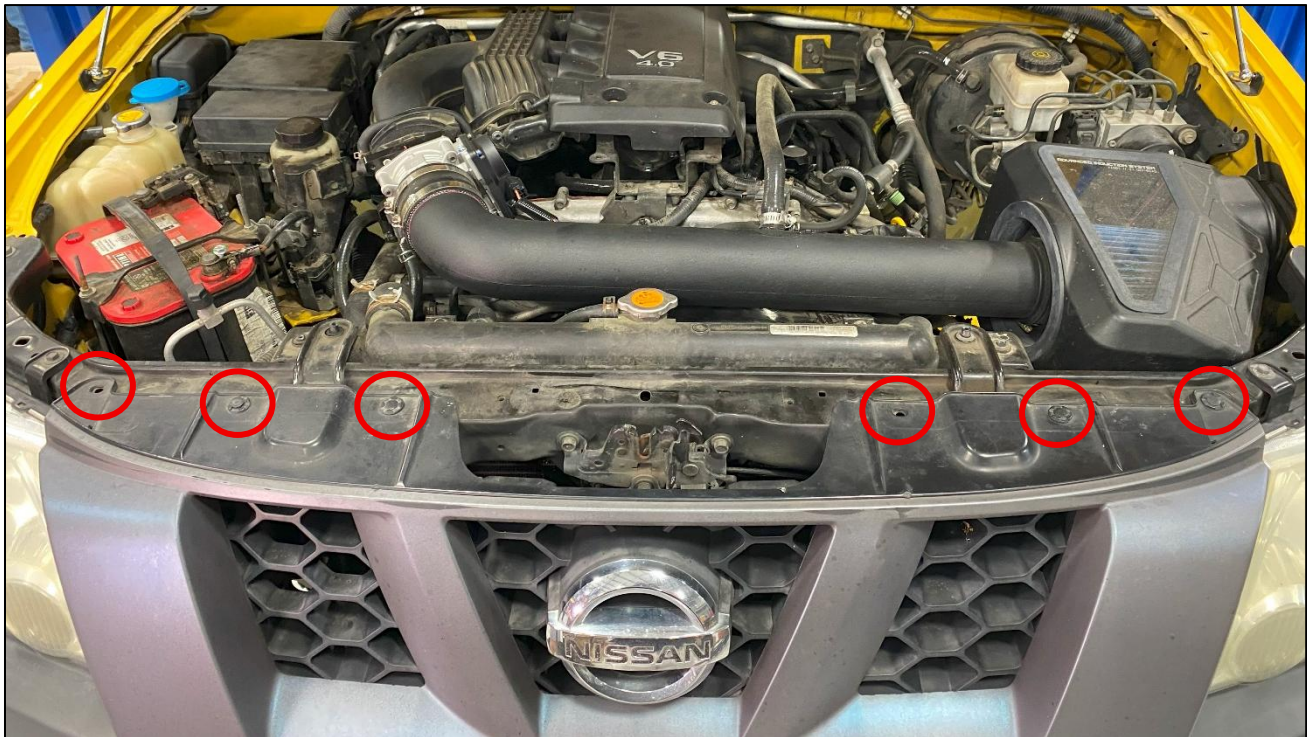


Figure 3

9. Remove the Front Grille from the vehicle. There will be (4) four plastic clips that will need to be released on the bottom of the Grille that secures it to the Front Bumper. *Figure 4.*

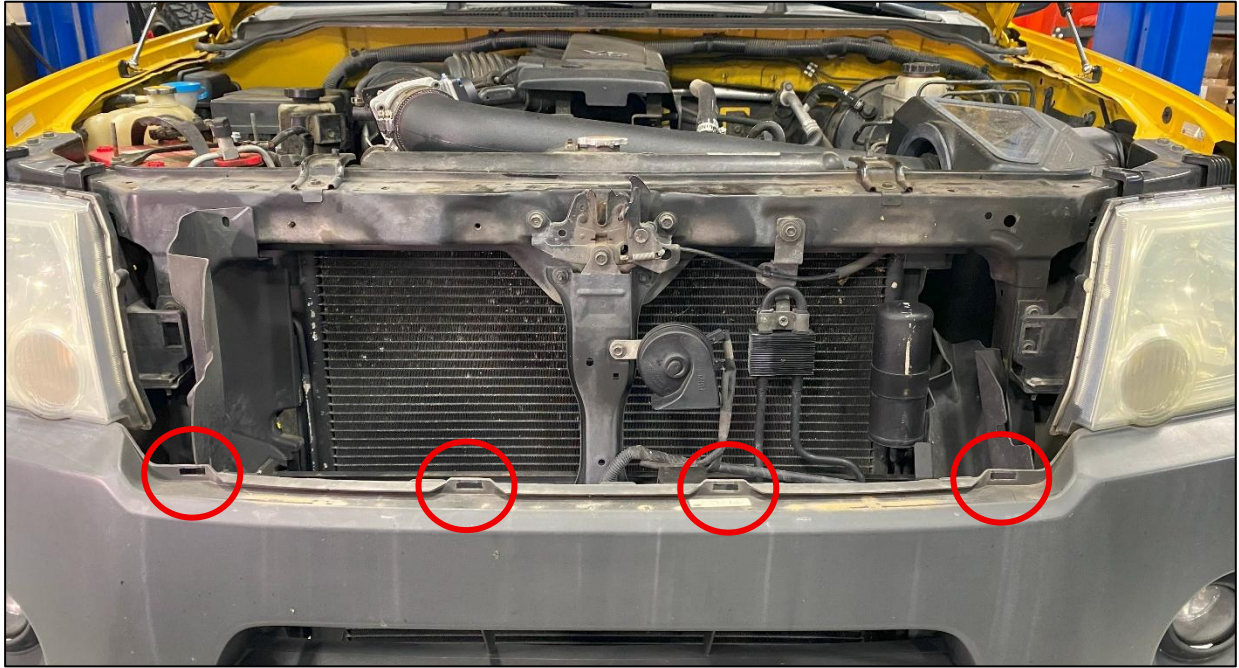


Figure 4

10. If equipped, remove the Splash Shield from the underside of the vehicle. *Figure 5.*

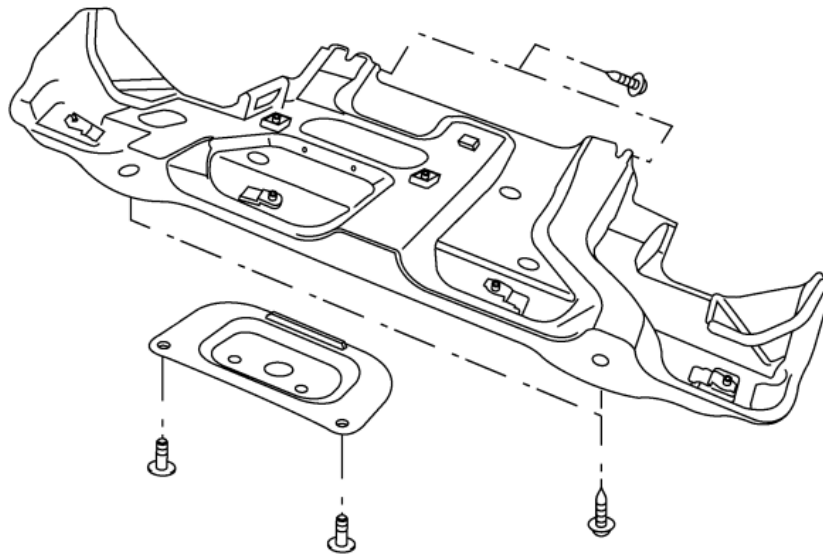


Figure 5

11. Remove the (5) five clips on the top of the Front Bumper. *Figure 6.*

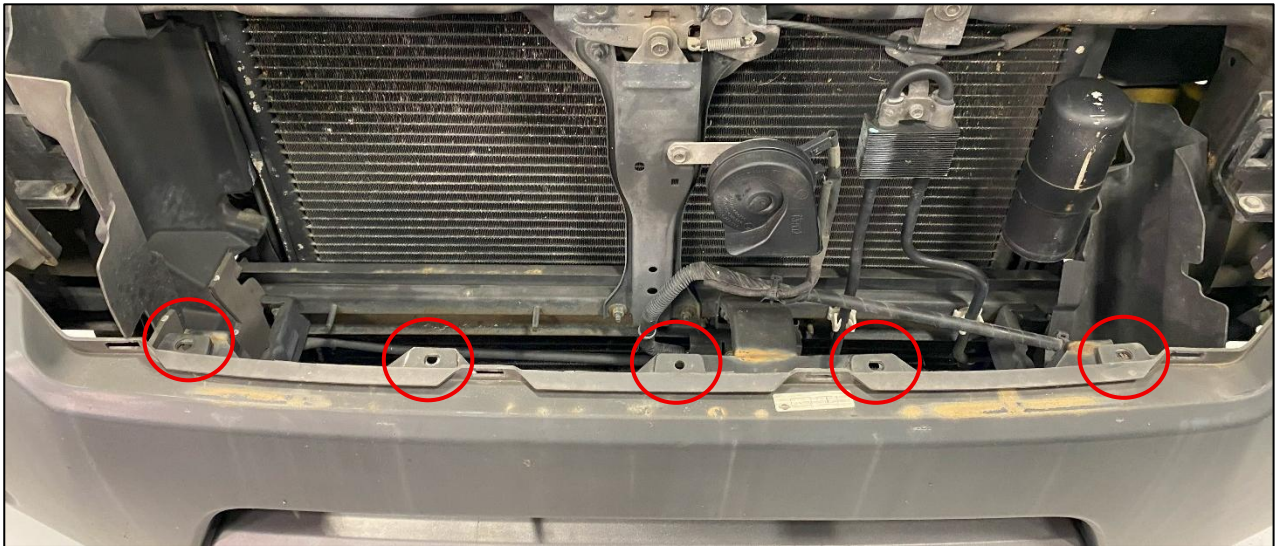


Figure 6

12. Remove the (1) one bolt on each corner of the Front Bumper. *Figure 7.*

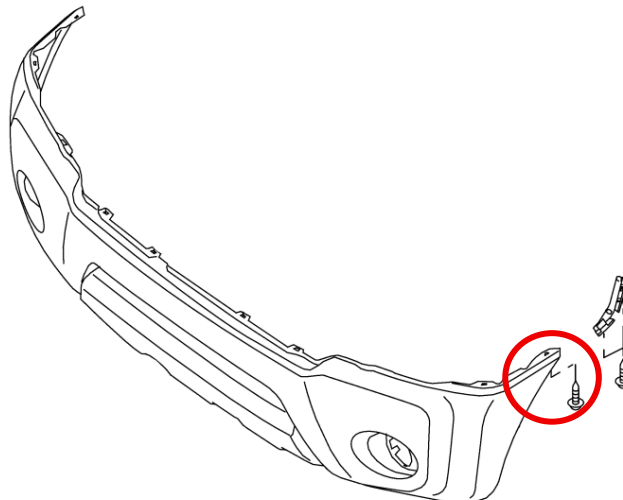


Figure 7

13. With the help of a partner, unclip the Front Bumper from the tabs by the headlights and pull the Front Bumper away from the vehicle. Check for anything caught on the Bumper when removing. *Figure 8.*



Figure 8

14. Remove the (2) two bolts securing each of the OE Bumper Tabs on the underside of the Front Fender. *Figure 9.*

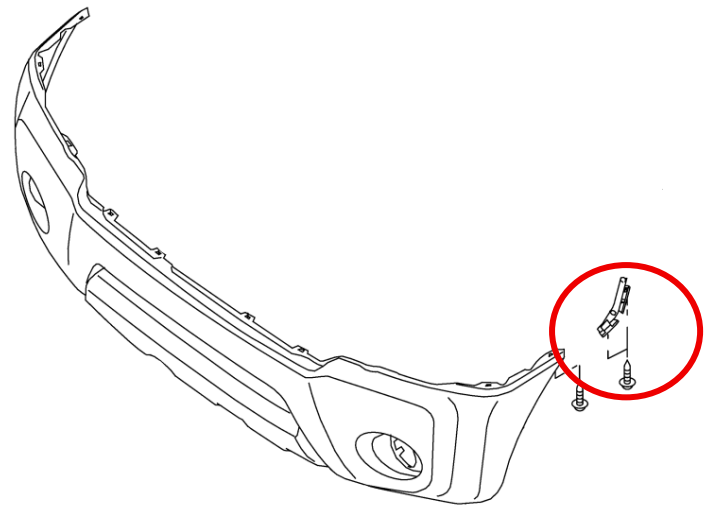


Figure 9

15. Remove the (2) two bolts securing the OE Tow Hook and remove the Tow Hook. *Figure 10.*

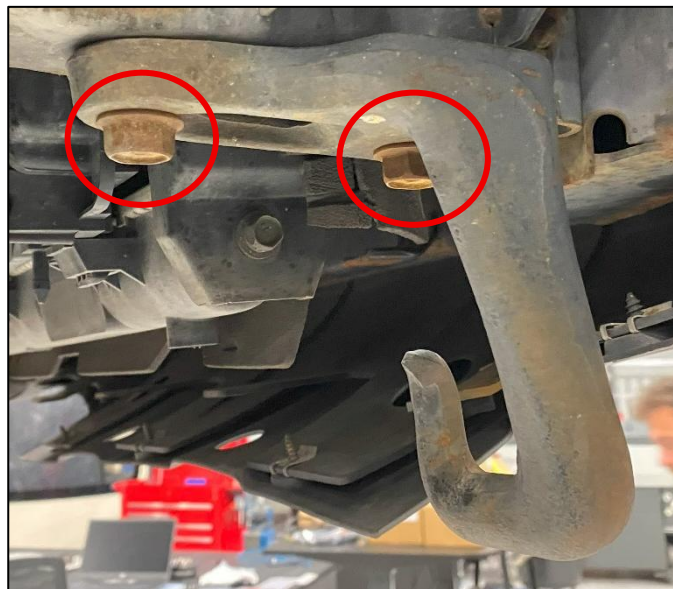


Figure 10

16. Remove the Radiator Air Guides from the vehicle, they are held on by plastic clips. *Figure 11.*



Figure 11

17. Unclip the wiring harness from the Front Bumper Bracket.

18. Remove the Front Bumper Bracket. It is secured by (6) six nuts. *Figure 12.*

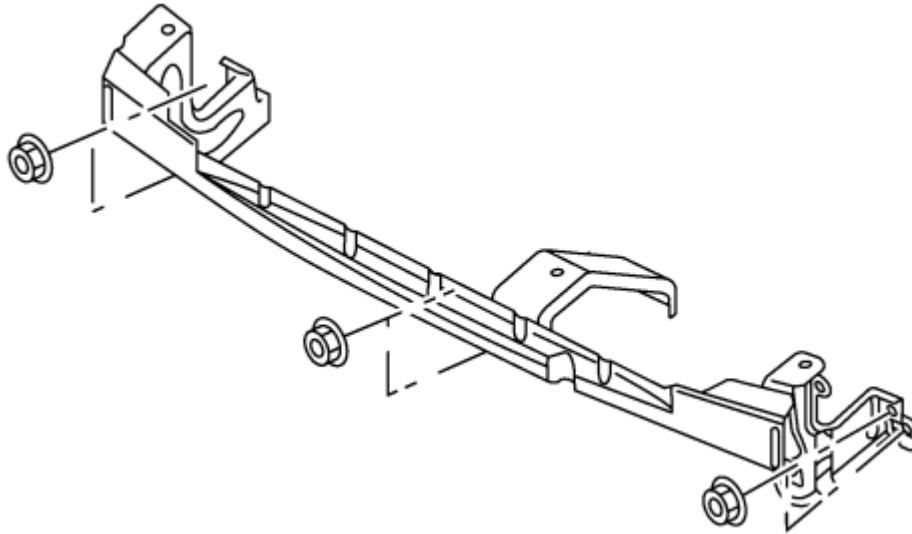


Figure 12

19. Remove the (4) four bolts securing the Front Crash Bar to the vehicle and remove the Crash Bar. *Figure 13.*

NOTE: All threads for the Crash Bar and Tow Hook tend to be rusty and dirty. We recommend cleaning the threads and running an M12 x 1.25 chase/tap to clean up the threads. The Frame Supports also tend to be rusty, sanding off the rust and painting over it is also recommended.

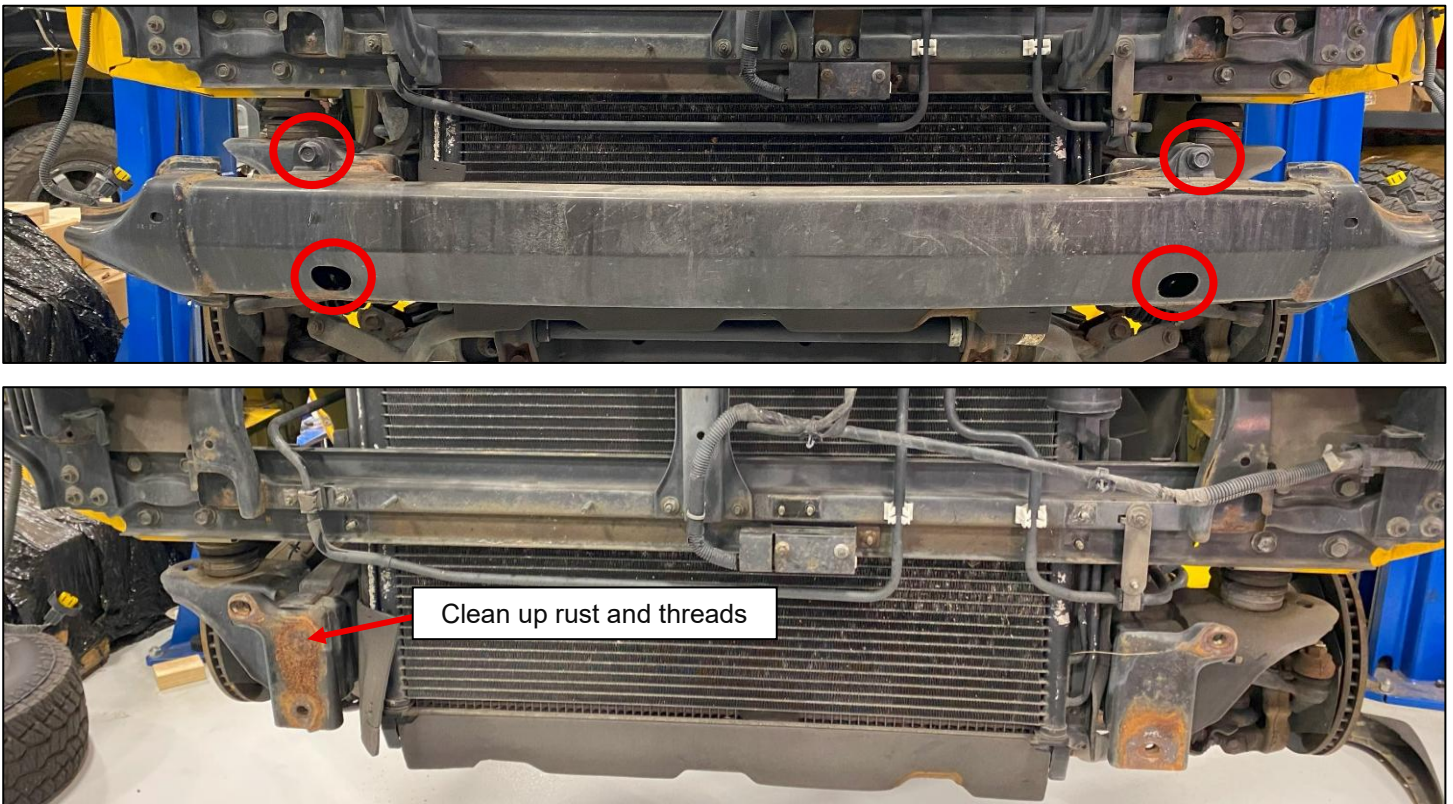


Figure 13

NOTE: Due to the Low-Profile nature of the Pre-Runner Bumper, Z1 Off-Road recommends removing unnecessary brackets and spray-painting exposed parts of the body to give the vehicle a cleaner look.
Figure 14.

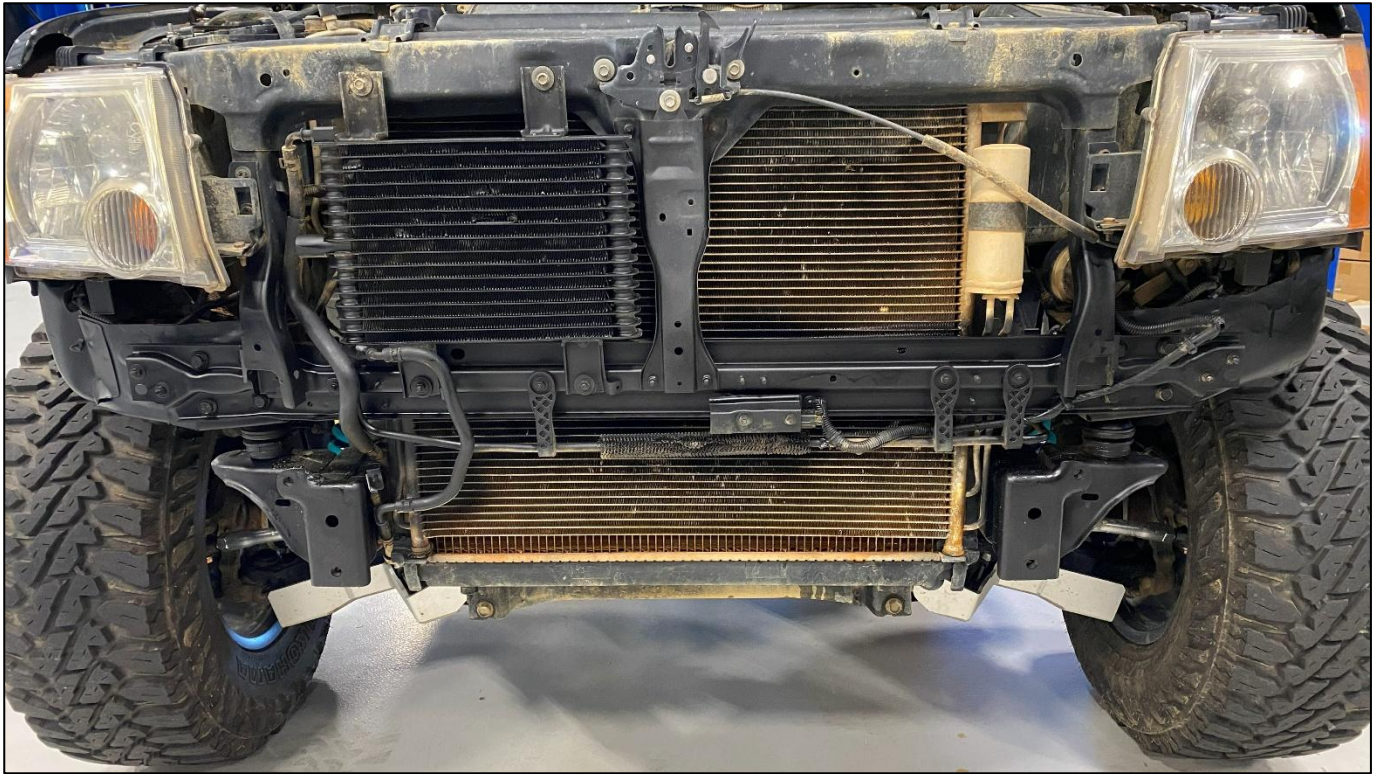


Figure 14

20. Locate the Bumper, (4) four shims, (4) four M12 x 1.25 Flanged Hex Head Screws, 35mm, (4) four M12 x 1.25 Flanged Hex Head Screws, 50mm and (8) eight M12 Washers. Position the Main Bumper to the Frame of the vehicle and loosely secure with (4) four M12 x 1.25 Flanged Hex Head Screws, 35mm with M12 Washers on each bolt. *Figure 15.*

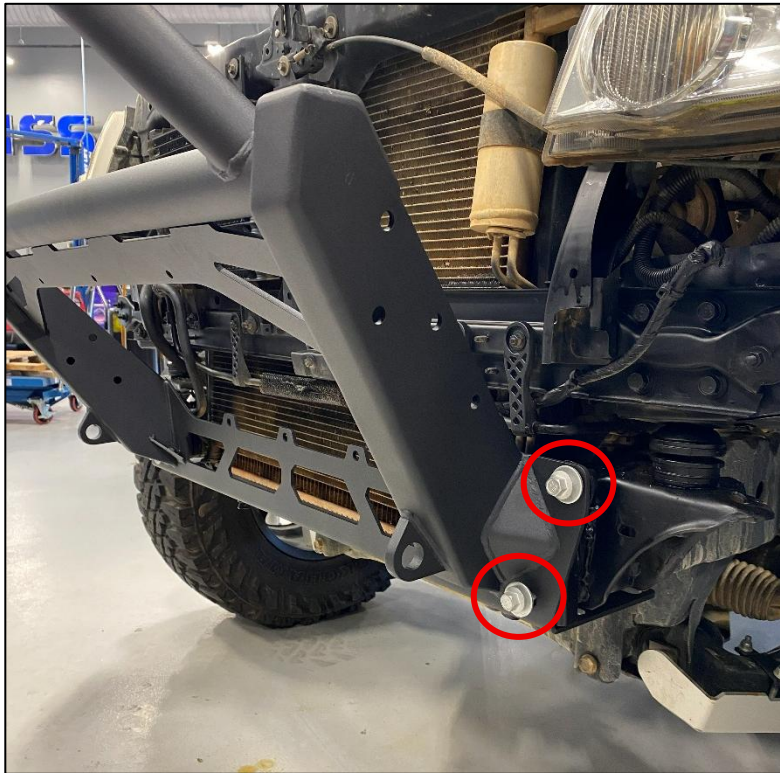


Figure 15

21. Loosely secure the bottom of the Main Bumper to the bottom of the Frame Rail with (4) four M12 x 1.25 Flanged Hex Head Screws, 50mm with M12 Washers. *Figure 16.*



Figure 16

22. On each side of the vehicle, place (2) two Shims between the Lower Bumper Bracket and the Lower Frame. If you are using a Z1 Skid Plate, you will only use (1) one Shim. The Skid Plate will be sandwiched between the Shim and the Lower Bumper Bracket. *Figure 17.*



Figure 17

23. Locate both Bumper Wings, (8) eight M10 x 1.5 Button Head Screws, 25mm and (8) eight M10 x 1.5 Locknuts. Place the Wings onto each side of the Bumper and secure with the M10 Hardware. *Figure 18.*

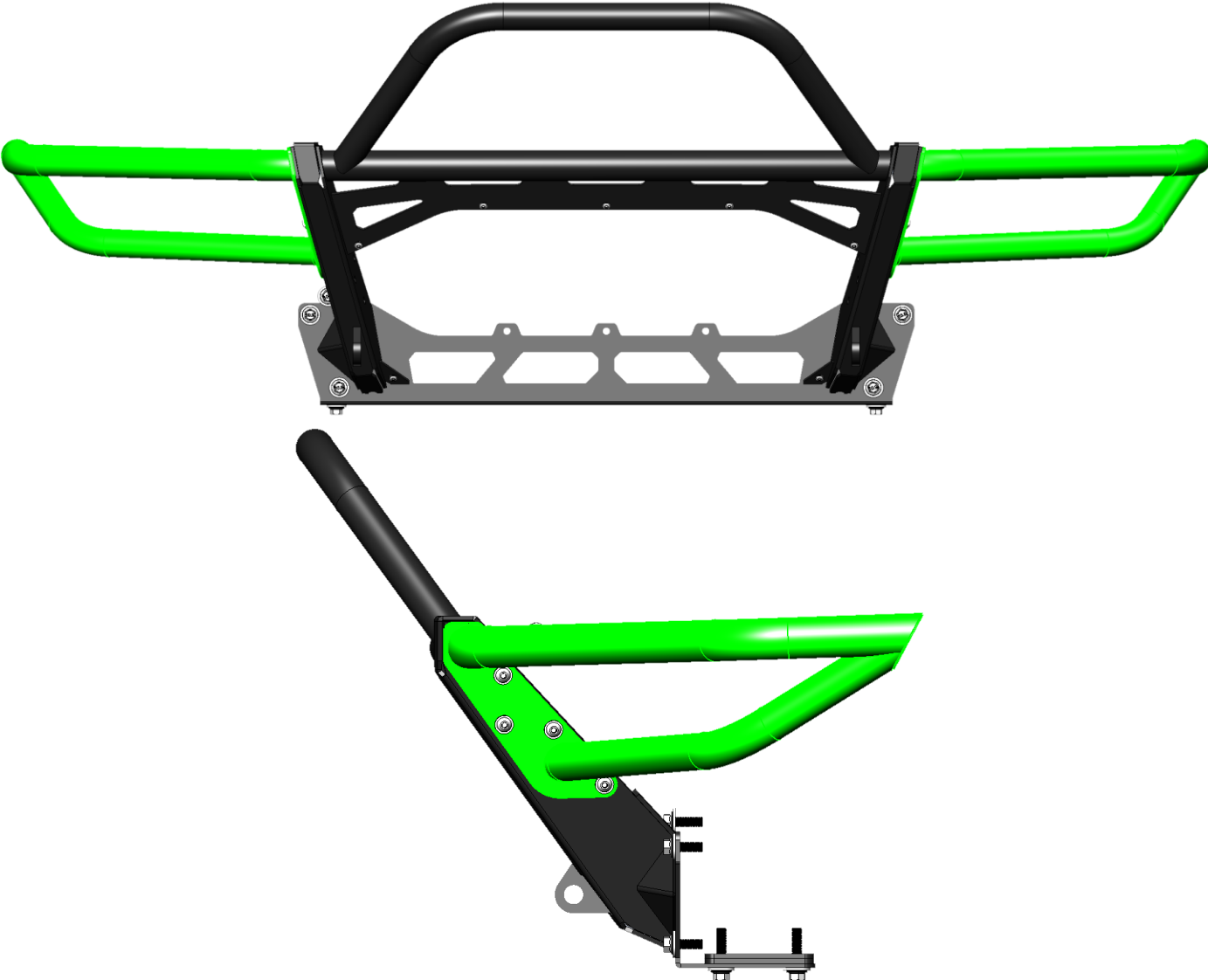


Figure 18

24. Adjust the Bumper to the desired position and torque all M12 Hardware to **99 ft-lbs.**
25. If you chose the Radiator Block Off Plate, locate the Plate and (7) seven M6 x 1.0 Button Head Screws, 14mm. Position the Radiator Plate onto the Bumper as shown and secure with the M6 Button Head Screws. If you are using the Winch Cradle, skip to *Step 26.* *Figure 19.*

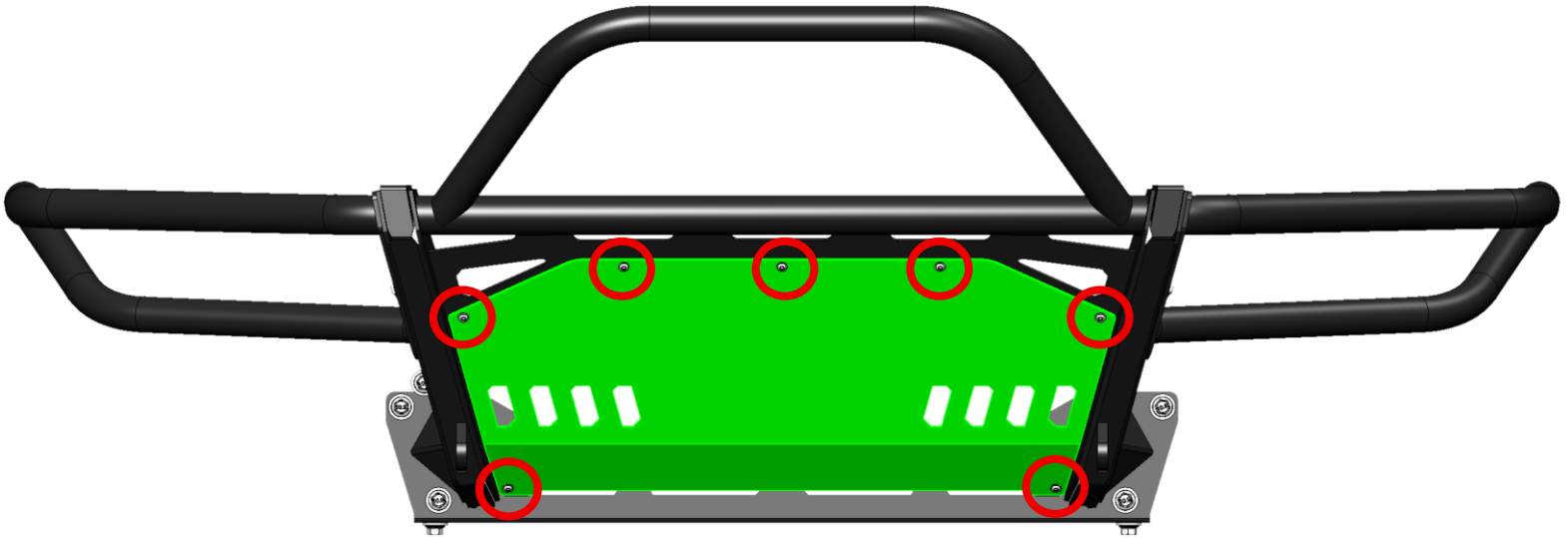


Figure 19

26. If you chose the Winch Cradle, locate the Cradle, (9) nine M10 x 1.5 Button Head Screws, 25mm, and (9) nine M10 x 1.5 Locknuts. Position the Winch Cradle into the Bumper and secure with (3) three Screws and Locknuts per side, and (3) three Screws and Locknuts on the back side. *Figure 20.*



Figure 20

27. If you have a 2009+ Xterra, the Front Grille will need to be trimmed to clear the new Bumper. Use 1" Painters Tape and follow the bend line across the front of the Grille. Cut below the tape with an Air Saw or equivalent tool and clean up any edges with a file or Die Grinder. *Figure 21.*

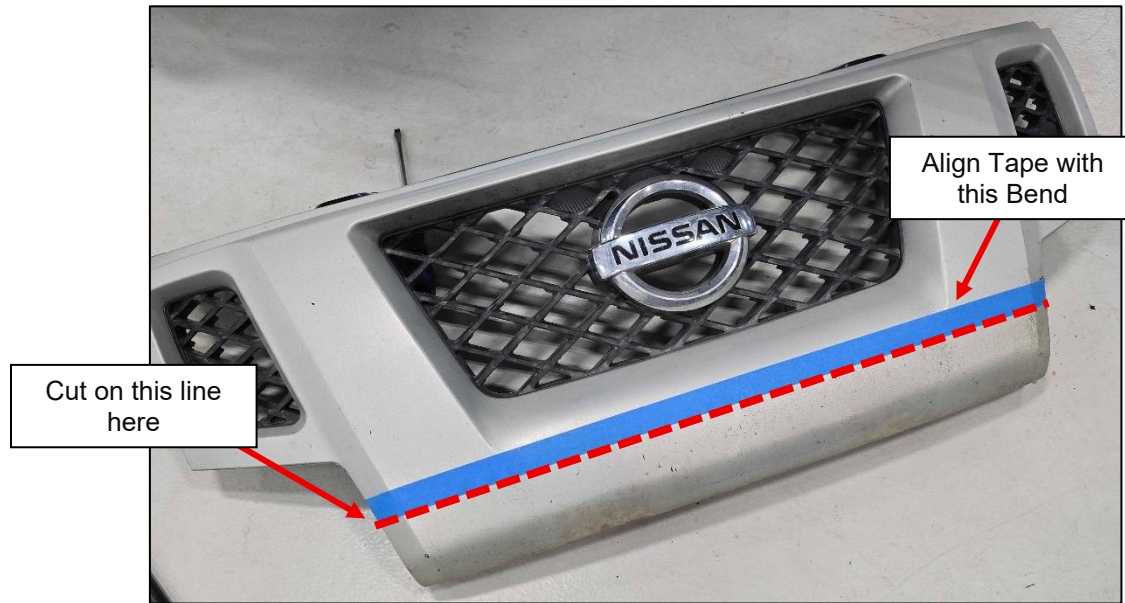


Figure 21

28. Reinstall the Front Grille onto the vehicle.

END

Additional Technical Support:
Contact Z1 Off-Road at info@z1offroad.com
Or call 678-839-8019 between 9am and 6pm ET